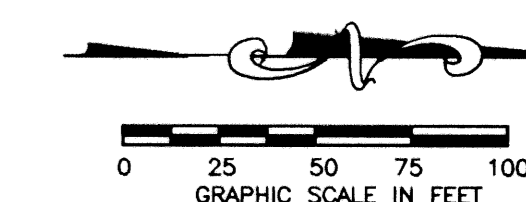


IRONHORSE PARCEL B-2

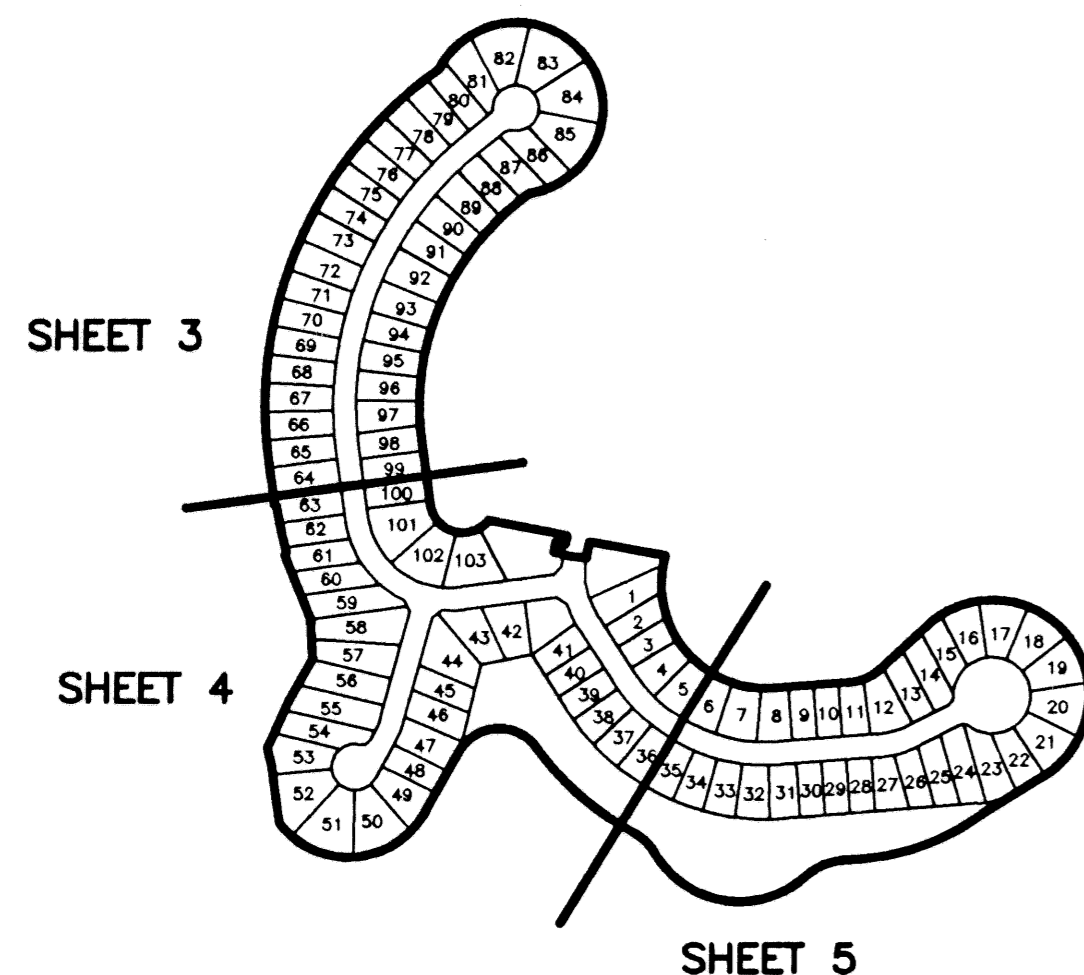
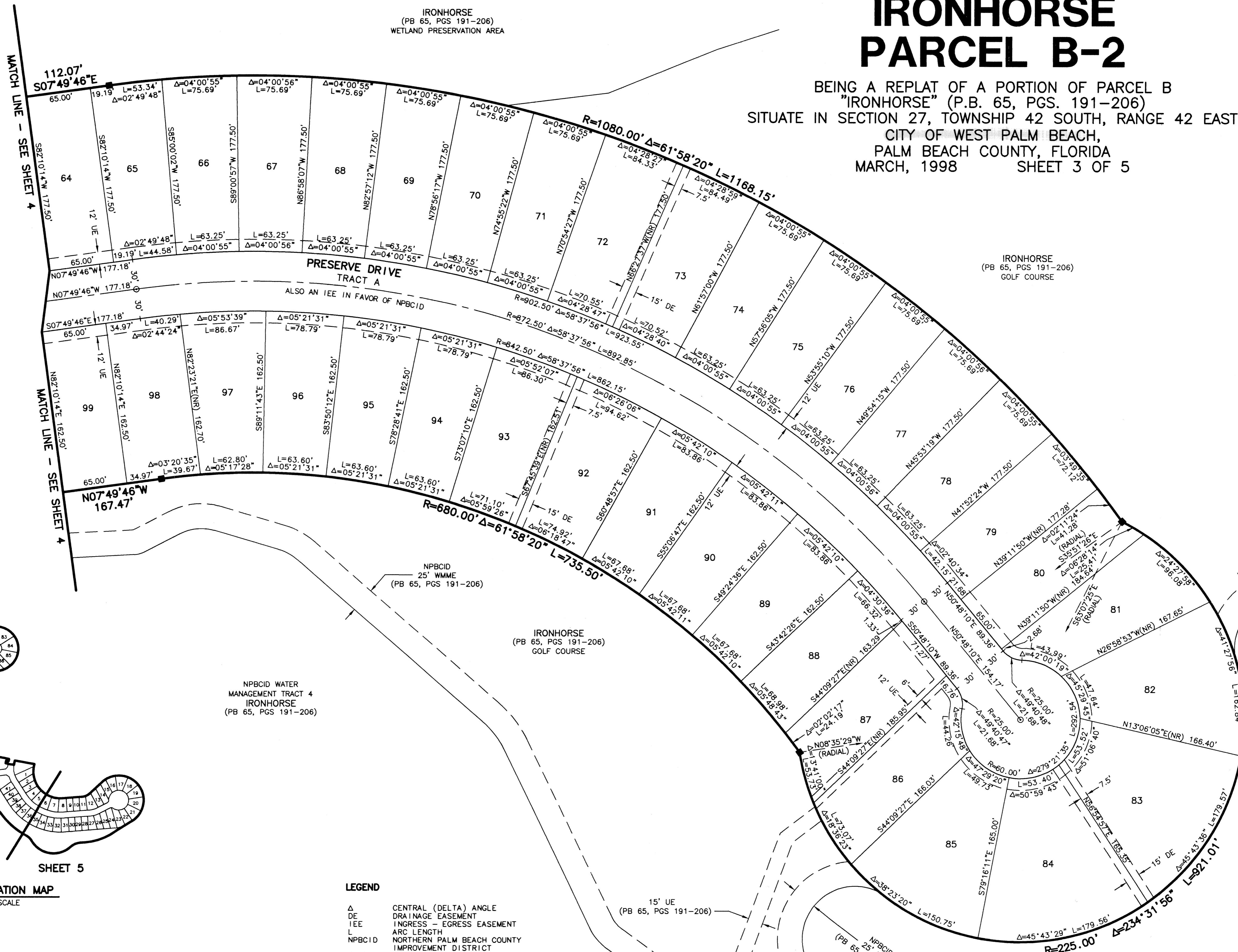
BEING A REPLAT OF A PORTION OF PARCEL B
"IRONHORSE" (P.B. 65, PGS. 191-206)
SITUATE IN SECTION 27, TOWNSHIP 42 SOUTH, RANGE 42 EAST
CITY OF WEST PALM BEACH,
PALM BEACH COUNTY, FLORIDA
MARCH, 1998 SHEET 3 OF 5

STATE OF FLORIDA
COUNTY OF PALM BEACH
THIS PLAT WAS FILED FOR
RECORD _____ DAY OF _____
AD, 1998 AND DULY RECORDED
IN PLAT BOOK _____ ON PAGES
_____ AND _____
DOROTHY H. WILKEN, CLERK
By: _____, D.C.

CIRCUIT COURT SEAL



IRONHORSE
(PB 65, PGS 191-206)
GOLF COURSE



SHEET LOCATION MAP
NOT TO SCALE

- LEGEND**
- Δ CENTRAL (DELTA) ANGLE
 - DE DRAINAGE EASEMENT
 - IEE INGRESS - EGRESS EASEMENT
 - L ARC LENGTH
 - NPBCID NORTHERN PALM BEACH COUNTY IMPROVEMENT DISTRICT
 - (NR) NON-RADIAL
 - ORB OFFICIAL RECORD BOOK
 - PB PLAT BOOK
 - PG(S) PAGE(S)
 - PUD PLANNED UNIT DEVELOPMENT
 - R RADIUS
 - UE UTILITY EASEMENT
 - WME WATER MANAGEMENT EASEMENT
 - WMME WATER MANAGEMENT MAINTENANCE EASEMENT
 - PERMANENT REFERENCE MONUMENT
 - FOUND PLS# 4763
 - SET PLS# 4763
 - PERMANENT CONTROL POINT
 - SET PLS# 4763
 - ⊕ CENTERLINE

- NOTES**
- THE LINEAR DIMENSIONS SHOWN HEREON ARE GROUND DISTANCES IN U.S. FEET AND DECIMAL PARTS THEREOF.
 - ALL LINES WHICH INTERSECT CURVES ARE RADIAL TO THOSE CURVES UNLESS OTHERWISE NOTED.

THIS INSTRUMENT WAS PREPARED BY MARY HANNA CLODFELTER, P.S.M. IN THE OFFICES OF MOCK, ROOS & ASSOCIATES, INC., 5720 CORPORATE WAY, WEST PALM BEACH, FLORIDA 33407.

SCALE:
1" = 50'
P.A. NO.:
97123.00
DATE:
MARCH, 1998
DRAWING NO.:
42-42-27-13

MOCK • ROOS
ENGINEERS • SURVEYORS • PLANNERS
5720 Corporate Way, West Palm Beach, Florida 33407
(561) 683-3113, fax 478-7248

**IRONHORSE
PARCEL B-2**
BEING A REPLAT OF A PORTION OF PARCEL B
"IRONHORSE" (P.B. 65, PGS. 191-206)
SITUATE IN SECTION 27, TOWNSHIP 42 SOUTH, RANGE 42 EAST
CITY OF WEST PALM BEACH,
PALM BEACH COUNTY, FLORIDA

IRONRPO6.dwg 9-16-98 7:16:00 am EST

REV.: 06-22-98
CAD FILE:
MUSSIRON\IRONRPO6